

Spence Creek

Origin of Spence Creek

Like most streams in Murfreesboro, Spence Creek is fed by groundwater in the form of seeps and springs. Springs like Three Rivers and Riverrock keep lower parts of Spence Creek flowing year-round. While upper parts of Spence Creek may go dry in the summer months, it's still home to a great diversity of aquatic life and other wildlife living in the streamside buffer.



Three Rivers Spring

Streamside Buffer: streamside buffers or a riparian zone are a vital part of the stream which provides habitat, holds the bank in place, and regulates water temperature. You can create a healthy buffer by planting trees and shrubs.

Impairments to Spence Creek

The State of Tennessee has deemed Spence Creek to be impaired because of sediment and a lack of streamside buffer. Sedimentation is a

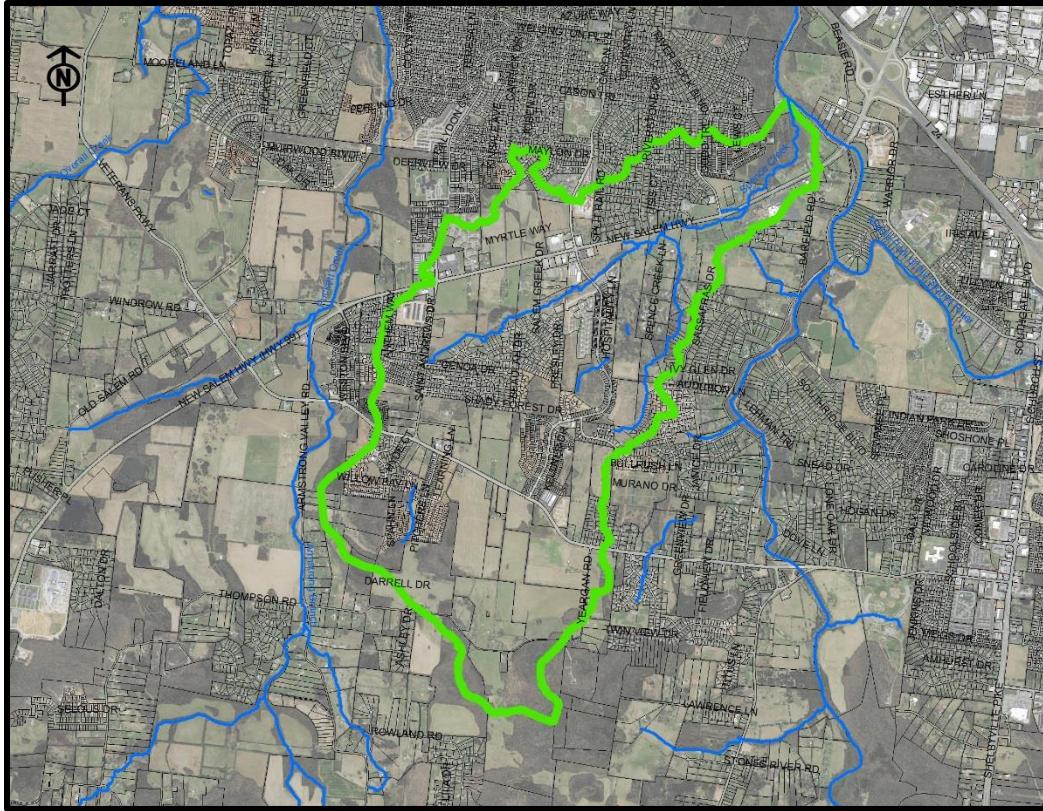
common impairment across the country and happens when dirt lost from a construction site or an eroding stream bank enters a stream. This dirt can cover the stream bed and delicate habitat there. When large enough sediment deposits are present it can alter the course of a stream.

Spence Creek Impairments:

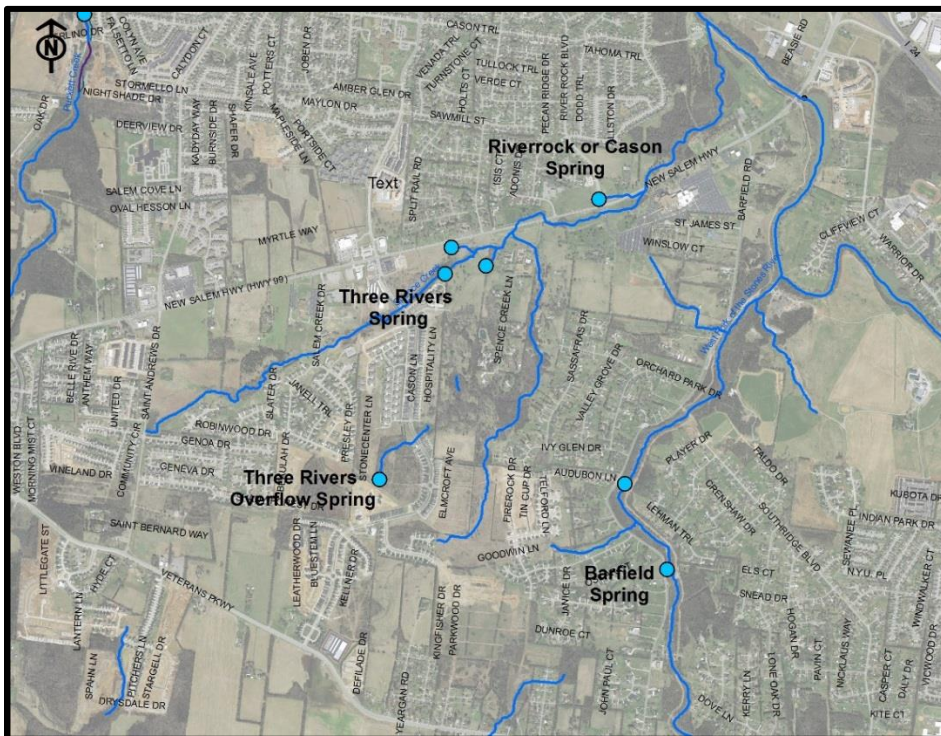
- Sedimentation/ siltation
- Alteration in stream-side buffer

Landmarks in the Spence Creek Watershed

- Salem Elementary
- World Outreach Church
- Fellowship United Methodist Church
- Southern Meadows
- Salem Creek
- Three Rivers



Spence Creek Watershed (Green)



Springs of the Spence Creek Watershed