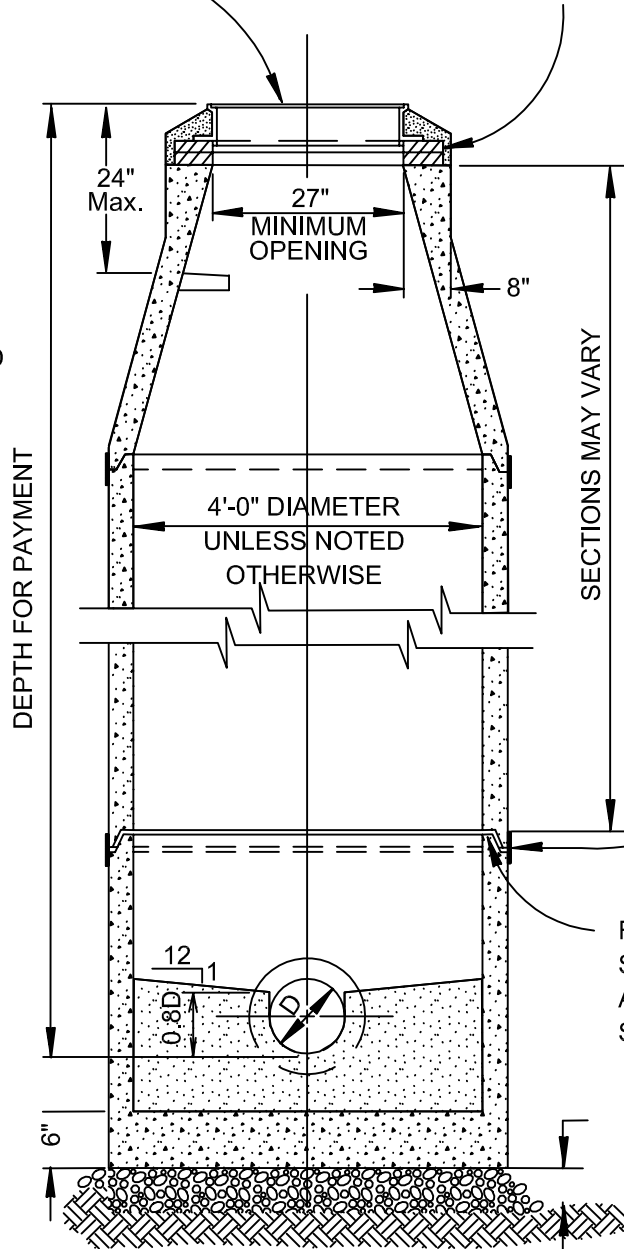


MANHOLE FRAME & COVER-  
SEE DRAWING S-2

PRECAST ADJUSTING RINGS  
AS REQUIRED TO BRING TO GRADE.  
SEE DRAWING S-3.

ALL PRECAST  
MANHOLE SECTIONS  
TO BE ASTM C478.  
CONE SECTION TO BE  
CONCENTRIC UNLESS  
OTHERWISE APPROVED  
BY ENGINEER



ALL INTERIOR TONGUE AND  
GROOVE JOINTS, LIFE EYE  
HOLES, & UNUSED STEP HOLES  
TO BE WIPED WITH EMBECO  
CEMENT MORTAR.

DEPTH FOR PAYMENT

SECTIONS MAY VARY

12" WIDE STRIP OF  
POLYOLEFIN BACKED  
EXTERIOR JOINT WRAP  
AT ALL JOINTS. SEE  
SPECIFICATIONS.

FLEXIBLE BUTYL RESIN  
STRIPS OF JOINT SEALANT  
AT ALL JOINTS. SEE  
SPECIFICATIONS.

6" CRUSHED  
STONE BASE

SEE DRAWING S-4  
FOR INVERT AND  
PIPE AT WALL  
DETAILS

DRAWING NOT TO SCALE

MAY 27, 1994

DRAWN BY: KMC  
APPROVED BY: VHS  
DATE REVISED: 3/24/05, 12/30/08, &  
8/11/11

PRECAST CONCRETE  
MANHOLE

STANDARD  
DRAWING NO.

S - 1

MURFREESBORO WATER & SEWER DEPARTMENT