

Puckett Creek

Pollutant Reduction Efforts, 2018-19

303 (d)	TMDL/WLA
Alteration in stream-side or littoral vegetative cover	No

Watershed Characteristics

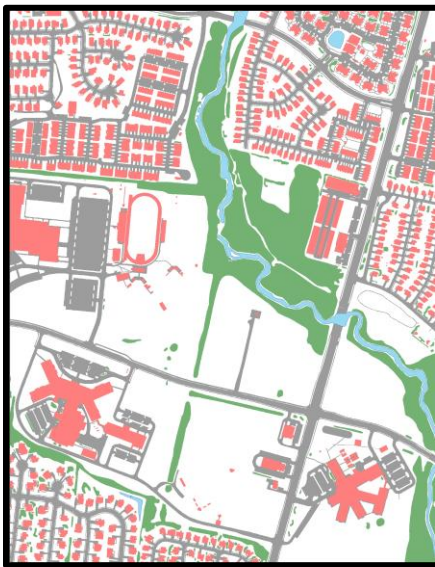


Fig. 1: Imperviousness around Fortress Blvd and Blaze Drive

24.1% Imperviousness 2018
21.75% Imperviousness 2016
18.9% Tree canopy 2018



Figure 3: Puckett Creek within protected buffer near Fortress Blvd

32
 Tennessee Macroinvertebrate Index – Blaze Drive (2018)

Stormwater Control Measures

22 sites with SCM's
220 acres treated with SCM's (estimated)

5,246 square feet pavers or porous

14 bioretention or rain gardens

Figure 2: SCM sites within the Puckett Creek Watershed

Stream-side littoral vegetative cover improvement

13.4 Acres of protected streamside buffer

32 Tennessee Macroinvertebrate Index – Blaze Drive (2018)

Figure 4: Water Quality Protection Area in Scottish Glen Neighborhood